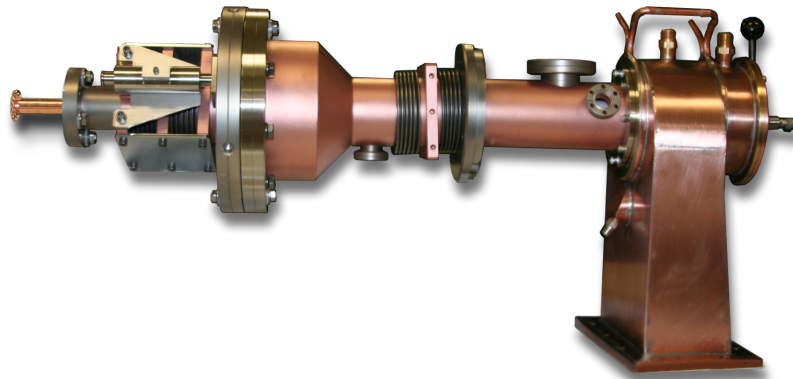


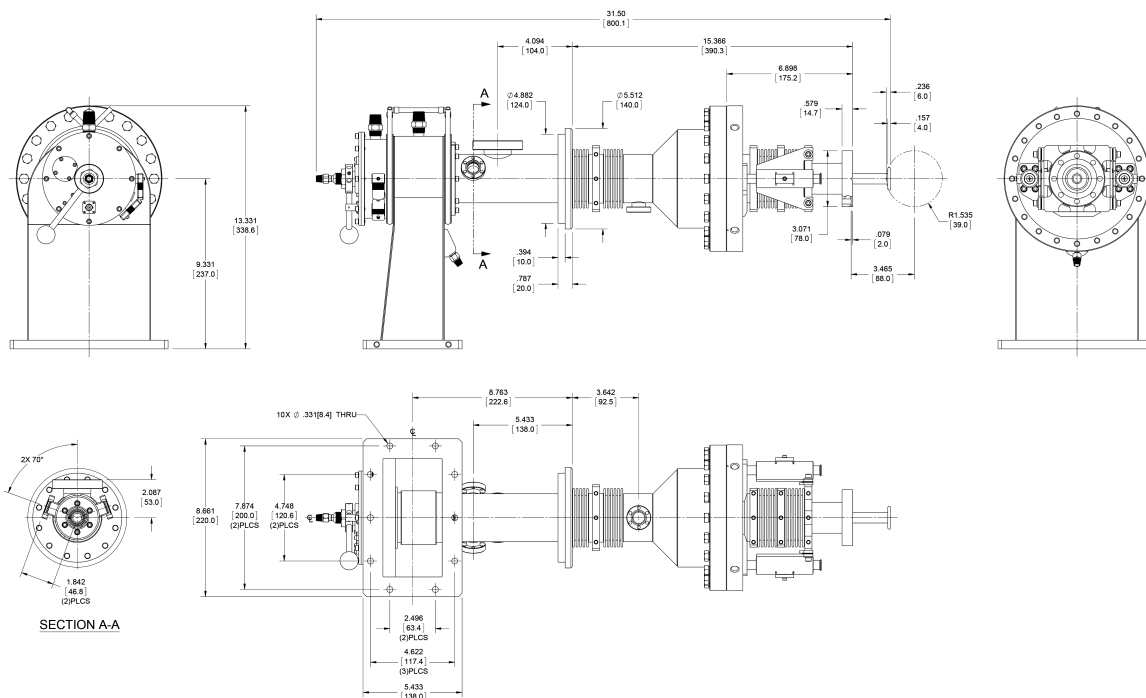
CPI Electron Device Business - Power Coupler Product Specification



The VWP3113 Fundamental Power Coupler was designed for the University of Beijing. The coupler design is based on a Cornell Power Coupler, with modified coupling, and a 40mm coax diameter. The design utilizes TiN coated multipactor suppression on the Windows, and high RRR copper plating for low RF loss.

FEATURES:

- 55 kW CW
- Air and water cooled
- Waveguide input
- Adjustable coupling
- Double window design
- Inner conductor may be biased

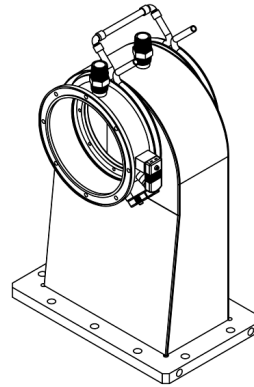


CPI Electron Device Business - Power Coupler Product Specification

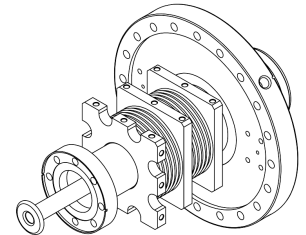
Electrical Parameters

Operating frequency	1.3 GHz
Maximum CW power:	55 kW CW (Design limit) with matched load Tested to 25 kW (CW)
VSWR	≤ 1.15 (Design Value)
Static heat load (2k)	≤ 1 W (Design Value)
Dynamic heat load (2k)	≤ 1 W (Design Value)
Static heat load (80k)	≤ 10 W (Design Value)
Dynamic heat load (80k)	≤ 70 W (Design Value)
Installation transverse offset	> 10 mm
Axial offset	> 5 mm
Vacuum leak rate	< 10 ⁻¹⁰ mbar.L /s
External qualify factor	8x10 ⁵ to 5x10 ⁶ variable adjustable
Cold assembly sealing type	TTF -III style aluminum Hex seal 1.752" diameter
Cold assembly outer conductor diameter	40 mm
Water cooling	Waveguide adaptor cooled with filtered water
Aircooling	Warm window cooled at waveguide adaptor and in inner conductor

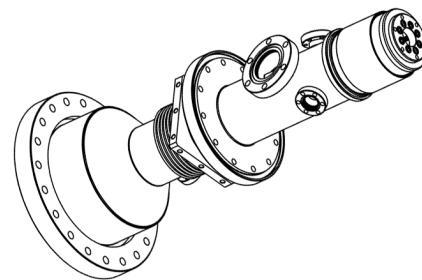
Product can be cleaned in CPI EDB's class 10 clean room after fabrication for an additional charge. If the product is not cleaned in CPI EDB's class 10 clean room, it will need to be done by the customer before the product is conditioned.



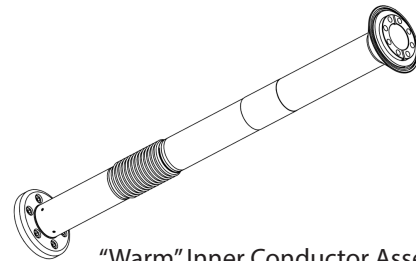
Waveguide Transition Assembly



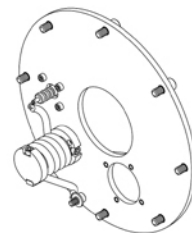
"Cold" Assembly



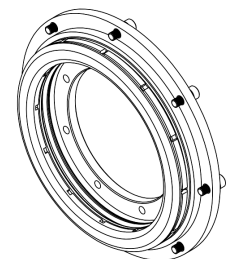
"Warm" Outer Conductor Assembly



"Warm" Inner Conductor Assembly



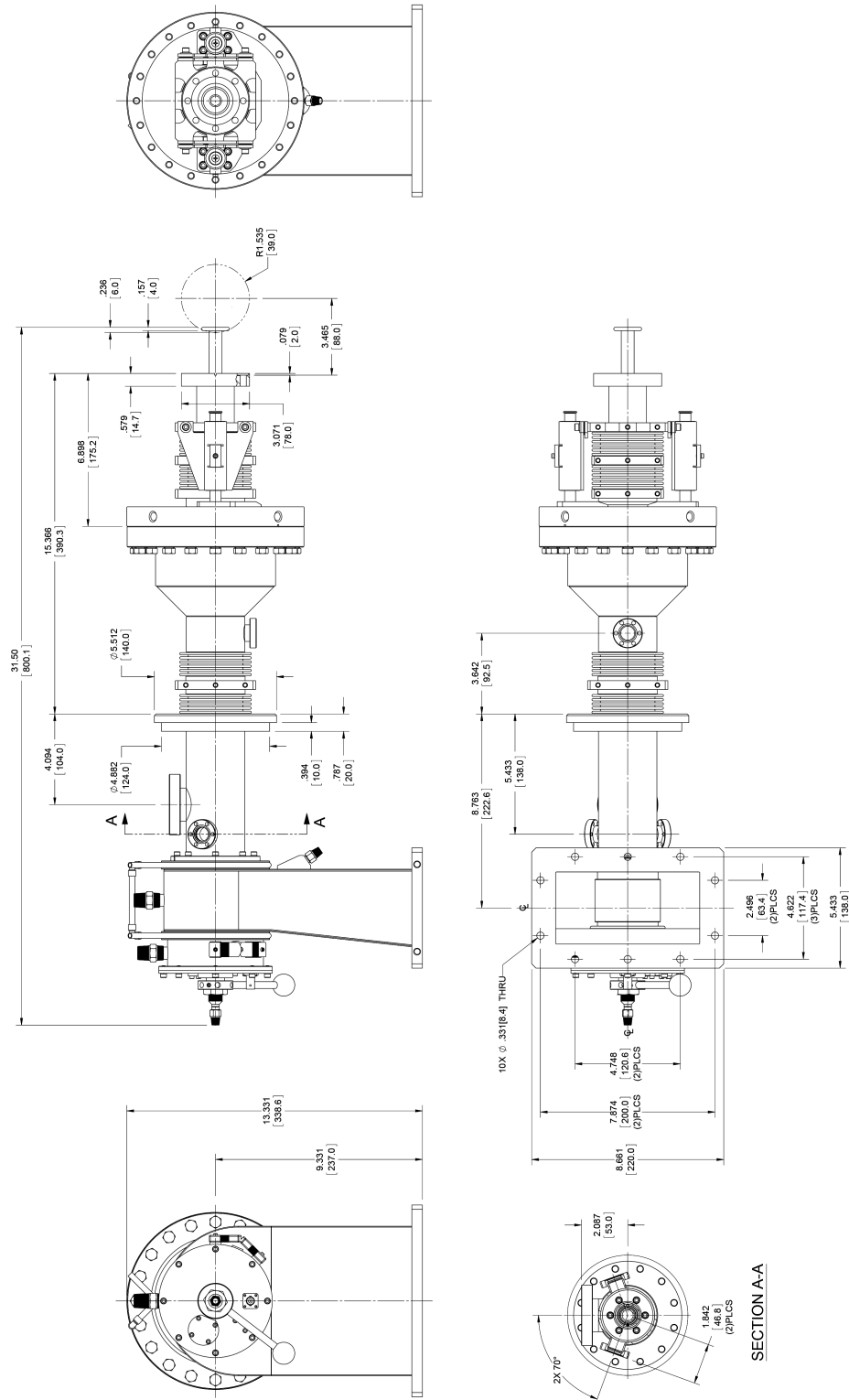
Biasing Assembly



Capacitor Assembly

Note: Product is supplied with a full set of Conflat gaskets
RF contact gaskets, coated nuts and bolts, and thermocouples.

CPI EDB 55 kW CW Power Coupler outline drawing: VWP3113



Beverly Microwave Division
 150 Sohier Road
 Beverly, Massachusetts
 USA 01915

tel +1 978-922-6000
 email ElectronDevices@cp-edb.com
 fax +1 978-922-8914
 web www.cpi-edb.com

For more detailed information, please refer to the corresponding CPI EDB technical description if one has been published, or contact CPI EDB. Specifications may change without notice as a result of additional data or product refinement. Please contact CPI EDB before using this information for system design.

©2024 CPI Electron Device Business. Company proprietary; use and reproduction is strictly prohibited without written authorization from CPI EDB.